



Visio+ Operator

manusa 
intelligent access

Visio+ Operator

A complete, multi-purpose solution for pedestrian access automation.

Visio+ is the latest in Manusa operators that can be installed on automatic single-slide or bi-parting doors, in a standard or telescopic configuration.

The Visio+ operator range is made up of three versions of drive unit: Visio+ 100, Visio+ 125 and Visio+ 125HD, the features and measurements of which adapt to all construction requirements.

The entire range of Visio+ operators is equipped with Manusa Inverter technology, with high-performance asynchronous motors and advanced control electronics for the best dynamic features to obtain greater energy savings.

Visio+ 100

Visio+ 100 Motor Group
One **gear motor**

Single-slide door: 120 kg
Bi-parting door: 90 kg per leaf

Visio+ 125

Visio+ 125 Motor Group
Two **direct drive** motors

Single-slide door: 160 kg
Bi-parting door: 120 kg per leaf

Visio+ 125HD

Visio+ 125HD Motor Group
Two **gear motors**

Single-slide door: 293 kg
Bi-parting door: 220 kg per leaf



- **Compatible with the entire range of Manusa door leaves and other commercial door leaves.**
- **Technological and safety features in line with Standard EN 16005.**
- **Connection to building automation and control systems.**
- **People counter.**



IoT technology is here

The new Visio+ operator includes many improved techniques, including the incorporation of **IoT technology** to control **connectivity** and **remote control** of the door. It also offers a series of additional functions through mobile apps for both users and the Technical Service.

- Incorporation of an independent communications bus (Manusa Bus*) designed to simplify the connecting of devices, providing improved signal integrity, lower electronics noise, and easier installation and connection.
- ESAT 2.0: one software for any door type (to be selected during installation) to remotely update the new software versions and provide direct contact with the Manusa Technical Service.
- It includes an electronic gateway, making it compatible with devices not fitted with Manusa Bus*.
- Door access using “virtual keys”.
- Both the hardware and software have been adapted to meet the requirements of specific regulations in certain countries.

TECHNOLOGY

- The fastest door in the market thanks to its high-power motor group.
- Three-phase AC motors with Direct Drive technology to provide unbeatable durability.
- The exclusive Manusa VV-VF Inverter technology (Independent Adjustment of Speed and Force) and the Advanced Motor Control Management, combined with direct drive and the optimised design of the track system, provide uniquely smooth movement.
- Very silent: Direct Drive and optimised track profile. **
- Greater accessory connectivity possibilities thanks to the Manusa bus*.
- Interconnection to home automation systems and industrial buses.
- Remote control and time programming via Ethernet thanks to the Manulink software.
- Possibility of incorporating people counter systems.
- Possibility of incorporating new accessories and functions.

EASY TO INSTALL

- Small number of components.
- Connection via the Manusa bus* simplifies wiring.
- Universal connector for all accessories.
- Universal fixing system for fixed leaves.
- Numerous self-supporting assembly possibilities thanks to the different beam profile versions.

ADAPTABLE TO ALL ENVIRONMENTS

- Given its refined design.
- Given its compact size with a lower visual impact.
- Thanks to its wide range of finishes, including customised finishes.
- Provides greater transparency of the leaves thanks to the hidden rail version, combined with the 175 mm cover option.

VERSATILE AND FLEXIBLE

- Given its dozens of assembly layouts.
- Can be used with all Manusa and commercial door leaves.
- Includes a wide range of accepted dimensions and weights.

SAFETY

- Gentle automatic reopening when obstacles are detected.
- Side safety sensors that prevent any risk of entrapment. Options according to requirements of door surroundings.
- Includes fire alarm connection.

* MANUSA BUS: connection system between the control electronics and the accessories that provides maximum reliability and easy installation. Automatically recognises accessories without having to switch off the operator (Plug & Play).

** Applies to Visio+125 only.

New Visio+ electronics

The Visio+ operator stands out for its connectivity.

Designed by Manusa, it allows for an independent network filter to be used and, thanks to its “gateway” board, it is backwards-compatible and can be used with earlier operator versions and with old interfaces.

It permits the remote updating of new software versions and can be fully adapted to different requirements and regulations, and allows for IoT connectivity.

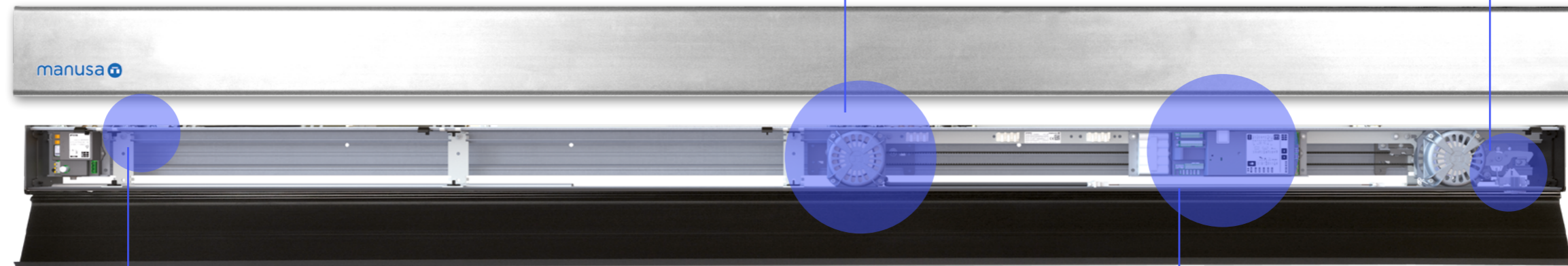
Safe and remote smart access administration and management using virtual key rings is one of the possibilities of this new operator.

Compatible with:



ELECTRICAL ELECTRICAL FEATURES	VISIO+ 100	VISIO+ 125	VISIO+ 125HD
Standard power supply	220-240 V ± 6% 50-60 Hz		
110V power supply option	100-120 V ± 6% 50-60 Hz		
Motor	1xAC Three-phase	2xAC Three-phase	2xAC Three-phase
Power per motor	110 W	250 W	250 W
Inverter Technology (exclusive to Manusa)	VV-VF		
Fuse protection	3.15 A (220 V) / 5 A (115 V)		
Operating temperature	-15 °C to 50 °C		
Transportation and storage temperature	-15 °C to 50 °C		
Rechargeable fail-safe battery	1x12 V DC 700 mAh		
Gear box	Yes	No	Yes
KINEMATIC FEATURES	VISIO+ 100	VISIO+ 125	VISIO+ 125HD
Opening speed (adjustable) per leaf	≤ 0.7 m/s	≤ 1 m/s	≤ 0.7 m/s
Closing speed (adjustable) per leaf	0.15 to 0.6 m/s	0.15 to 0.6 m/s	0.15 to 0.6 m/s
Maximum acceleration	0.7 m/s ²	2 m/s ²	0.4 m/s ²
Maximum leaf weight Single/Bi-parting (leaf/Kg)	1x120 / 2x90	1x160 / 2x120	1x293 / 2x220
Maximum leaf weight Telescopic Single/Bi-parting (leaf/Kg)		2x107 / 4x80	
OTHER FEATURES	VISIO+ 100	VISIO+ 125	VISIO+ 125HD
Monitoring of control systems	Yes	Yes	Yes
Fire alarm connection	Yes	Yes	Yes
Opening movement protection	Yes	Yes	Yes
Emergency stop	Yes	Yes	Yes
Detection of obstructions	Yes	Yes	Yes
Monitored fail-safe battery	Yes	Yes	Yes
Monitored safety / movement switches	Yes	Yes	Yes
Safety photocell connection	Yes, maximum 2	Yes, maximum 2	Yes, maximum 2
Manusa Bus	Yes	Yes	Yes
Current loop connection	Yes	Yes	Yes
Lock status monitoring	No	Yes	Yes
IoT module	Yes	Yes	Yes
Radio-frequency antenna	European frequency: 868 MHz		

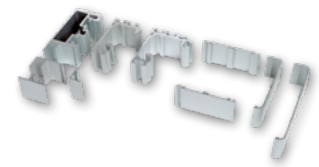
Features



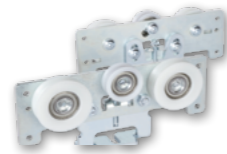
Three-phase AC motors
Direct Drive technology.



Automatic lock
Locks the leaves even during power failures. Informs of an error if not locked correctly.**



Profiles
Numerous combinations.
Versatile and robust.



Track solution
Track rail and trolleys to guarantee silent operations.

Easy access
Front cover with flexible hinge for easier access.



High-performance electronics
VV-VF Inverter technology and Advanced Motor Control Management for uniquely smooth movements. Fail-safe batteries incorporated.

Filter
Ensures compliance with regulations and reduces costs in the event of faults due to power surges.

Manusa Bus*
Greater possibilities and easy connection of accessories.

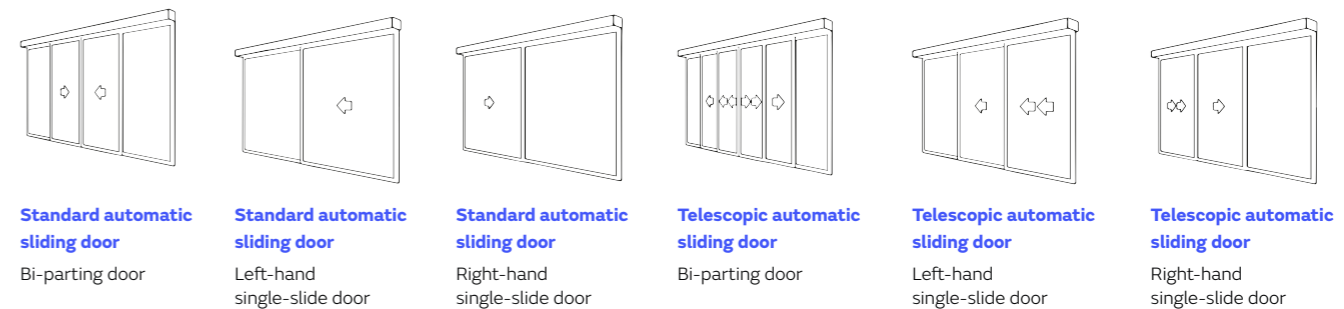
Manusa Visio+ operators offer many different assembly versions depending on the type of building and construction requirements. They include a self-supporting system and are compatible with the entire range of Manusa door leaves.

Certificate of **durability for 1 million cycles** according to Standard UNE 16361:2014+A1:2017.

Product certified by the following laboratories:



Associated certificates:



* MANUSA BUS: connection system between the control electronics and the accessories that provides maximum reliability and easy installation. Automatically recognises accessories without having to switch off the operator (Plug & Play).
** Only available for Visio+125 and Visio+125HD.

Accessories

ACTIVATION: Drive systems to control safe opening.



DDS-S switch
Side safety sensor.



DDS-A and DDS-B hybrid switch
Hybrid presence and movement sensor.



Planar radar
Movement sensor.



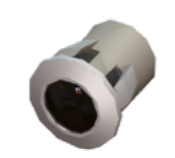
Planar radar 2.0
Directional movement sensor.



Optima Prox+
Contactless drive



Contactless card reader
For coded cards.



Photocell
Avoids accidental closure.



Push button and elbow push switch
Device for opening the door.
Also available in wireless version.

REMOTE: To control the operating mode of doors and manage malfunctions.



Optima+ program switch
Automatic door control program switch.



Optima Pocket+
Wireless automatic door control program switch.



Smart program switch
Selects operating mode on LCD screen.



Remote control
For remote management, can be combined with other controls.



Optima program switch
Basic automatic door control program switch.



DoorWifi program switch app
Mobile app for remote door management.

CONTROL: Systems to optimise efficient entry and exit management.



Manulink interface
Control software
Allows remote control and time programming.



Openlinx system
Door interconnector and controller.
Remote management of automatic door operations from web browser and integration with industrial and building automation communication buses.

SAFETY: Devices to control the entrance and exit, providing maximum user protection.



Numeric keypad
Also available in wireless version.



Outside key switch
Also available in wireless version.



Lock
To open or close the door using other accessories, such as the outside key switch, the remote control or the control program switch.
Floor lock ***
ERO lock ***
Leaf lock ***

OTHER CONTROL ACCESSORIES

Manusa e-Sat device, Technical service configurator.

OTHER AVAILABLE ACCESSORIES

Ledglass leaf lighting *** Customised designs using LED lighting.

Glass with integrated Venetian blind *** A blind integrated into the glass.

Self-dimming glass *** Allows the transparency of the leaves to be changed for specific privacy needs.

People counter *** Crowd measuring system for knowledge of entrance and exit traffic.

OTHER SAFETY ACCESSORIES

CO48 panic break-out system that mechanically opens the door with no power
Built-in mechanical unlock
Remote mechanical unlock

* Refer to the technical data sheets.

** The characteristics described in this document are purely informative and are in no way binding.

*** Consult our commercial department.

The manufacturer reserves the right to make modifications without prior notice.



HEADQUARTERS

Avda. Via Augusta, 85-87, 6th floor
08174 · Sant Cugat del Vallès
Barcelona · Spain

+34 935 915 700
manusa@manusa.com

www.manusa.com

FACTORY

Ctra. El Pla de Sta Maria, 235-239
Pol. Ind. de Valls
43800 Valls (Tarragona) · Spain

+34 977 609 601
fabrica@manusa.com

www.manusa.com



D90031-EN